



CANTER TD

FG6-106 4 X 4

Chassis Breaking

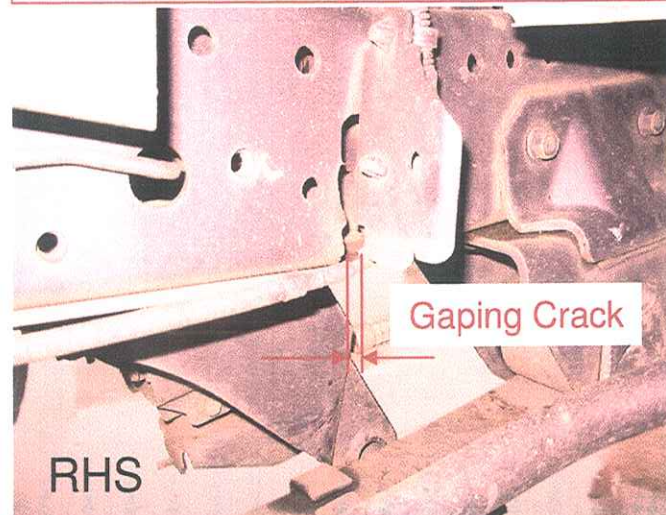
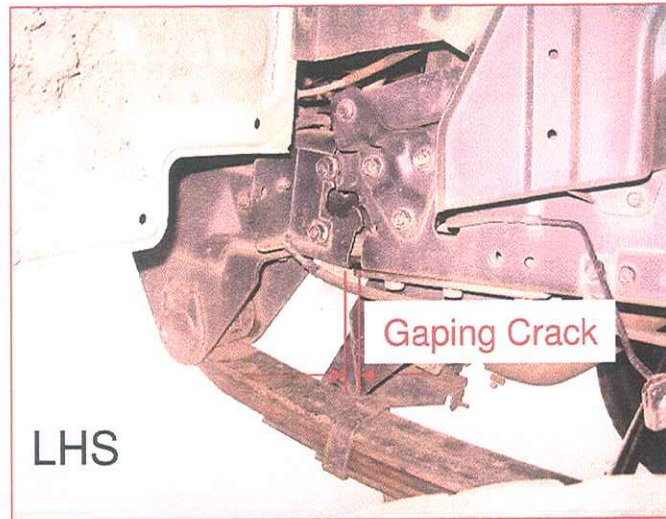
Customer “ Ride Wild Tours”

Cab leaning backwards



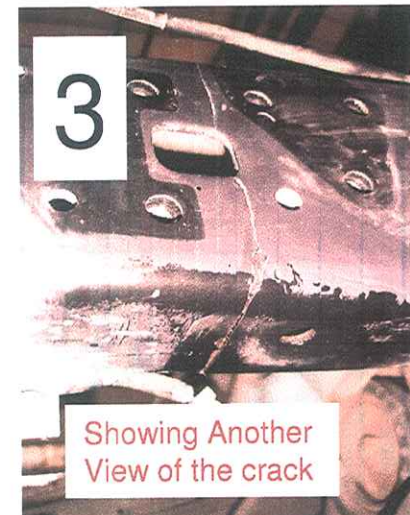
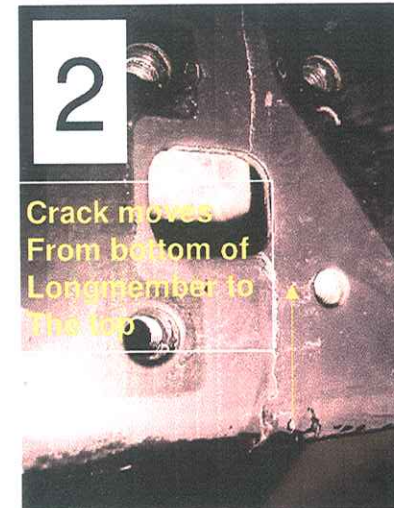
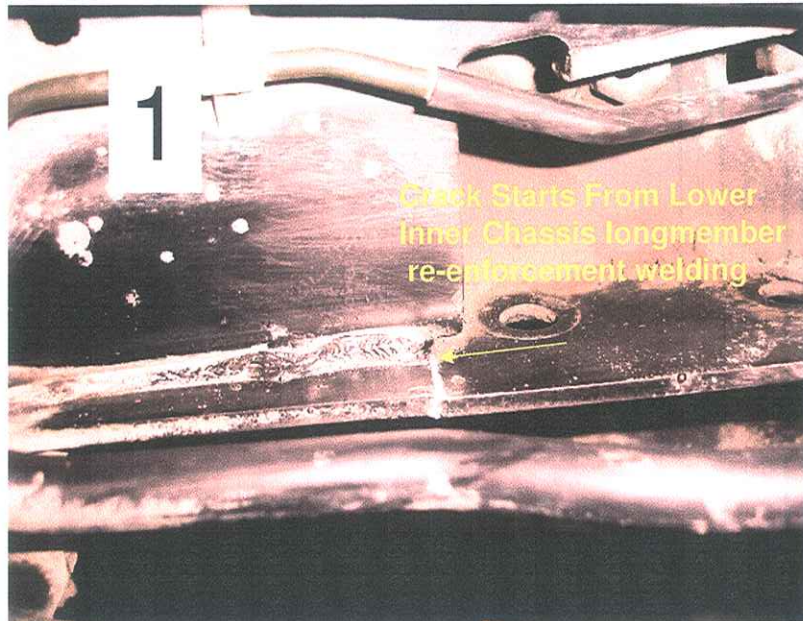
- Customer’s Vehicle brought in to the dealer.
- Notice how the cab is leaning backwards.

Closer Inspection On Vehicle



- 3 X FG canters have been reported to service of broken chassis.
- All vehicles have had the frames breaking in the exact same area.

Start Of The Crack



New Pre-fabricated support brackets



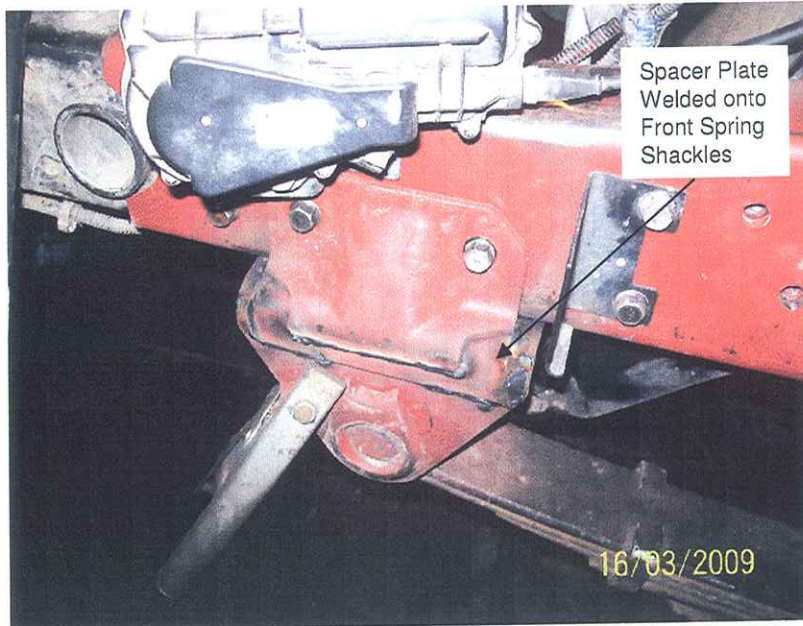
- Each hole in the support bracket is utilised either with a fastener, or routing for a cable / brake pipe.
- Support bracket fits over the outer side of the longmembers.
- Inner side of chassis longmembers has already supplied welded nuts to accommodate the additional high tensile bolts to fasten the support brkts.

Fitting the Supports to Longmembers



- The unmodified front spring shackle is removed from the frame.
- The support brackets are then tapped into position over the outer sides of the longmember where the frame breaks.

Mounting of Modified Front Spring Shackles to chassis.



- L & R spring shackle mounting bolts length, to be increased by 5mm each .
- 2 x fasteners on the outer side of frame.
- 4 x fasteners to the underside of longmember.

Technical groups to give feedback on problems in different area's

- Break into groups.
-