





# TRACKMASTER

**BUILT TOUGH**

**MANUAL SINGLE CAB:  
\$89,500 + ON ROADS**

**LAUNCH EDITION  
INCLUDES FREE TRAY,  
SNORKEL AND  
EXTRA FUEL TANK**



**CALL US NOW ON 07 3205 0380 OR EMAIL [SALES@AAV4X4.COM.AU](mailto:SALES@AAV4X4.COM.AU)  
[WWW.AAV4X4.COM.AU](http://WWW.AAV4X4.COM.AU)  [@GAZAUSTRALIA](https://www.facebook.com/GAZAUSTRALIA)  [@GAZAUSTRALIA](https://www.instagram.com/GAZAUSTRALIA)**





\*Overseas model shown



**TRACKMASTER** is a new generation of famous GAZ AWD trucks. The model combines unique cross-country capability with outstanding functionality and state-of-the-art design.

**TRACKMASTER** has inherited all of its predecessors' off-road talents and everything that made them possible in the first place: body angles, ground clearance, torsion frame, underdrive gear, locking differential of the front and rear axles and the tyre inflation system. The new vehicle offers greatly improved steerability and comfort.





\*Overseas model shown

## ADVANTAGES



Pneumatic transfer case



60% approach angle and 315mm road clearance



1.2m fording depth



Pneumatic brakes with ABS system



Central tyre inflation



Electric winch - 12v front and rear option



Suspension drivers and passenger seats\*



Differential locks front and rear



Free tray, snorkel and dual tanks



42 inch tyres



Optional Allison auto

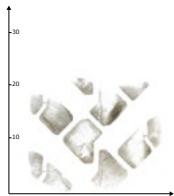
\*Only available on the 6 seat version

A power take-off device that can be attached to the transmission or to the transfer case will make it possible to fit the truck with a broad array of add-on equipment.

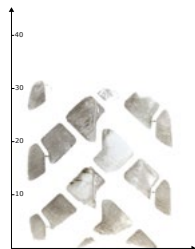
Thanks to a reinforced frame made of high-strength steel, high load capacity tyres and axles, heavy duty rear suspension, and air brakes the truck can carry a heavier load without compromising drivability, reliability and overall structural strength.



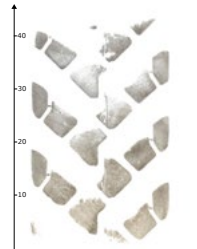
P-4.7 bar



P-1.9 bar



P-0.9 bar



\*Overseas model shown





## PERFORMANCE

Thanks to the reinforced frame made of high-strength steel, new driveline, wheels with improved wheel disks and new high capacity tyres and axles with new steering knuckles the vehicle now boasts greater load carrying capacity at the same time retraining outstanding reliability and structural strength. The new TRACKMASTER has a spacious three-seat cabin made of galvanized steel. The fordable depth is 1.2m.

## ON-ROAD AND OFF-ROAD APPLICATION

Designing this truck, GAZ engineers sought to improve its on-road behavior by fitting it with an integral power steering system and parabolic suspension in the front. The upshot is that **TRACKMASTER** has become easier to steer, rides more smoothly and holds the road better. A fully-pneumatic braking system with ABS provides efficient braking even with a slight push on the brake pedal.



Maximum slope angle  
not less than 31°



Obstacle height  
400 mm



Fording depth  
1200 mm



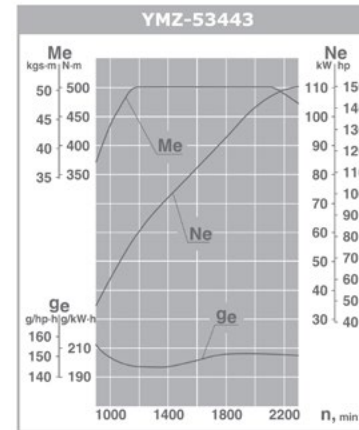
Ditch width  
700 mm





## ENGINE

The elastic YMZ 534 diesel engine delivers a lot of torque even at a very low speed. The engine's output is 149 h.p and 490 Nm of torque is available from 1200 rpm.



TECHNICAL SPECIFICATIONS	YMZ-53443
Power, kW (hp)	110 (150)
Max. torque, Nm (kgf-m)	490 (50)
Speed at max torque, rpm	1200-2100
Min, specific fuel consumption, g/hp per hour	197 (145)
Engine lifetime, thousand km	700
Dimensions, mm l/w/h	941/715/976
Weight, kg	480

## CONFIGURATION AND COMFORT

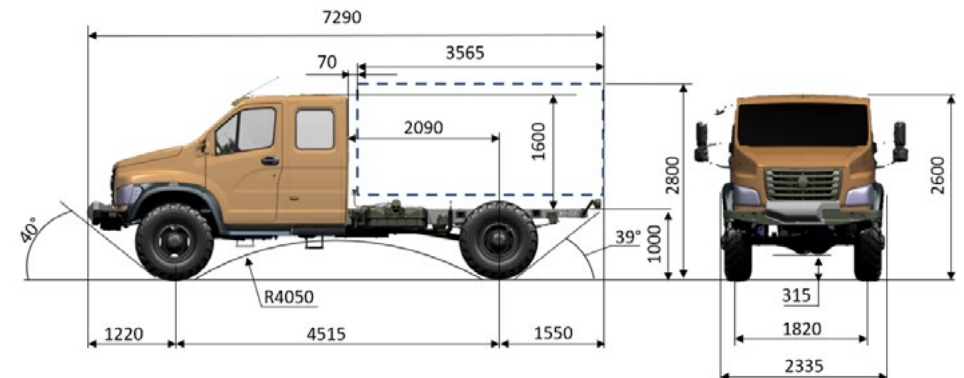
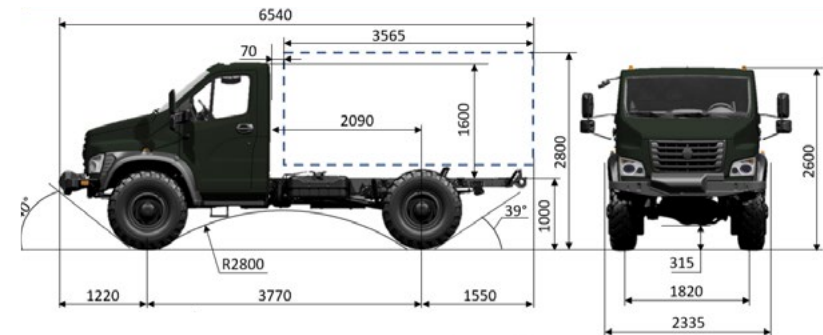
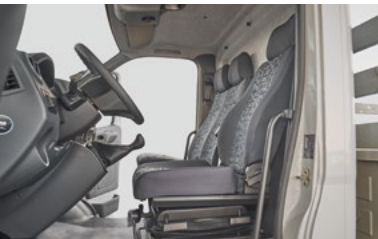
The vehicle has an adjustable sprung driver's seat, an air conditioner, a heater, audio system with apple screen mirroring, under run mirror, tyre inflation system, central locking, adjustable steering column, electric windows, heated door mirrors and cruise control.



The standard cabin has seats for three people. The crew cab has seats for six with dual front suspension seats and is fitted with a rear seat convertible into a wide bed.

Crew cab is available for production once we have passed ADR's for the single cab.



\*Overseas models shown



VEHICLE SPECIFICATIONS	C41A23 	C42A43 
Drive system	4x4	
Intended use and concept	Cargo transportation over public roads	
GVW, kg	7450	
Curb weight, kg	440	4800
Maximum permissible front/rear axle load, kg	3200/4200	
Overall length (for vehicles fitted with a winch), mm	6665	7410
Overall width, mm	2620	
Overall cab height, mm	2655	
Road clearance, mm	315	
Angle between front wheels and bumper, degree (front overhang angle)	40	
Angle between rear wheels and bumper, degree (rear overhang angle)	35	
Wheelbase, mm	3770	4515
Minimum turn radius, m	11	12.4
Maximum gradeability, %	60	
Fuel range on the highway	500km with one fuel tank	
Fuel tank, capacity, l	95 each	
Truck capacity (chassis), t	2.95 (extended base, single row cabin)	2.77 (extended base, double row cabin)
12 v Winch, availability, type, features	17,000 pound or 25,000 pound sherpa winch	
Payload area (drop-side platform), l/w/h, mm	3.400 / 2.175 / 365 (extension board 880)	
Engine	YMZ-534	
Power output / RPM	109.5 kW (148.9 hp) / 2.300 RPM	
Max. torque /RPM	490 Nm / 1.200-2.100 RPM	
Transmission	Manual, five-speed, with or without power take-off, optional Allison auto	
Transfer mechanism	Two-gear, with power take off	
Driving axles	Final drive: bevel, hypoid. Differential: cam-type. Front axle knuckles are fitted with constant velocity joints	
Brakes	Pneumatic	
Steering system	Integral screw-and-ball nut steering. Steering ratio: 16.6:1 (in the middle position); 19.6:1 (in the end positions). Adjustable tilt steering column	
Suspension	Front suspension: parabolic springs with rubber and metal connection to the joints, hydraulic double-action telescopic shock absorbers / rear suspension: two longitudinal semi-ellipsoid springs with rubber compression springs with double-action hydraulic telescopic shock absorbers	



# COLOUR CHART



SILVER METALLIC  
SILVER LIGHT



WHITE



GREY  
TITAN



RED  
CHILLI



\*Overseas model shown



## GAZ RACING







# **TRACKMASTER**

**BUILT TOUGH**



CALL US NOW ON **07 3205 0380** OR EMAIL **SALES@AAV4X4.COM.AU**  
**WWW.AAV4X4.COM.AU**  **@GAZAUSTRALIA**  **@GAZAUSTRALIA**